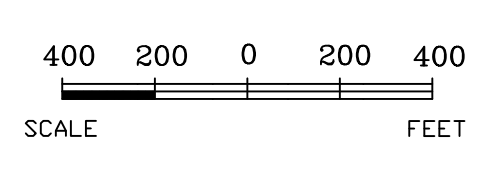
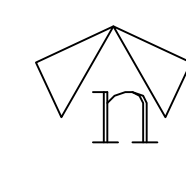


CITY OF ALTAMONT



Project Name and Address :
CITY LIMITS
 CITY OF ALTAMONT
 EFFINGHAM COUNTY
 MOUND TOWNSHIP
 ILLINOIS

CITY LIMITS.DWG Sheet:
 02/07/97
 Last Rev. Nov.2003
 Scale Corrected Copy
 1 OF 1

- REFERENCES
- Ord. 206 - 25 Jan 88 - An Ordinance Establishing Boundaries
 - Ord. 238 - 22 Jul 91 - Prairie Trunk RR
 - Ord. 281 - 22 Apr 96 - E. Meadows Drainage W. Side
 - Ord. 293 - 12 May 97 - Folding Bleacher
 - Ord. 292 - 12 May 97 - South Dak. Subdivision
 - Ord. 294 - 12 May 97 - June Hill
 - Ord. 306 - 22 Jun 98 - Part of MayFair Village
 - Ord. 307 - 22 Jun 98 - Part of Mardoni's Sub.
 - Ord. 316-99 - 12 Apr 99 - Part of MayFair's Sub. Rev.
 - Ord. 324-99 - 8 Nov 99 - First Baptist Church
 - Ord. 358-02 - 22 Jul 02 - Mesnard Sub. N/S W/T.P. Union Cemetery
 - Ord. 374-03 - 10 Oct 03 - Mathias Plat, Kull Farms Plat, City Gen. Site